

LIQUIDATION

AUCTION

Terry Thompson Farms & Others

FARM EQUIPMENT & 10.84± ACRES OF REAL ESTATE

SATURDAY, MARCH 6, 2021, 9:00 AM EST

7287 Haynes Lenon Highway, Evergreen, NC 28438



CONSIGNMENTS WELCOME!

GAL #2563 | SCAL #4062



REBEL
AUCTION CO., INC.

P.O. Box 549, Hazlehurst, GA 31539

912-375-3491 • 1-800-533-0673

Fax 912-375-7384

Email: auction@rebelauction.net

www.rebelauction.net

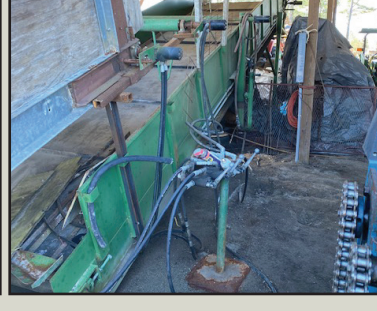
Sale Managers

LARRY DAVIS 912-282-5725 (Equipment)
AARON EASTERS 843-858-0677 (Equipment)
KEITH BALDWIN 256-312-5480 (Real Estate)

ONLINE BIDDING PROVIDED BY:

proxibid.

There will be a 10% Administration Fee with \$350 cap per item.



www.rebelauction.net 1-800-533-0673

REAL ESTATE SELLING AT 11:00 AM

11 ± ACRES OF FARM LAND

542 Silverspoon Road, Columbus County, Evergreen, NC



Selling From 7287 Haynes Lenon Highway, Evergreen, NC 28438

TERMS: All properties are selling as is, where is. 10% buyer's premium. 10% down day of auction. Balance at closing within 30 days. All information provided by seller believed to be correct, but not guaranteed by the auction company. Prospective bidders should rely upon their own inspection. All announcements from auction stand take precedence over all printed and oral statements. Property is subject to all easements, current survey, inspection of property and information contained in public records.

For More Information Contact: Keith Baldwin, CAI, Broker
Rebel Real Estate 64010, Keith Baldwin, NCAL 10219, NCRE 309175



REBEL

AUCTION CO., INC.

P.O. Box 549, Hazlehurst, GA 31539

912-375-3491 • 1-800-533-0673

Fax 912-375-7384

Email: auction@rebelauction.net

www.rebelauction.net

Address Service Requested

Pre-Approved Financing Available

Call Brad Davis 800-533-0673

For Great Competitive Rates From

Farm Credit Express & Streamline Financial



**FARM CREDIT
EXPRESS**



**STREAMLINE
FINANCIAL SERVICES**
Equipment Lending Specialist

TIME SENSITIVE MAIL
Please Deliver on Time

THURSDAY, MARCH 11, 2021 - 8:30 AM EST

Monthly Farm & Construction Equipment Auction
1175 Bell Telephone Road, Hazlehurst, GA

SATURDAY, MARCH 13, 2021 - 10:00 AM EST

Absolute 25+/- Acres of Real Estate, Grain
Facility & Cotton Gin
265 N. Main Street, Dexter, GA

SATURDAY, MARCH 13, 2021 - 11:00 AM EST

Absolute Complete Fertilizer, Peanut & Gin
Business Liquidation
265 N. Main Street, Dexter, GA

SATURDAY, MARCH 20, 2021 - 9:00 AM EDT

Farm Equipment Liquidation Auction,
Pondville Farms
4200 St. Charles Road, Bishopville, SC

SATURDAY, MARCH 27, 2021 - 9:00 AM EDT

Bamberg County Open Consignment Auction
448 Cattail Road, Olar, SC 29843

SATURDAY, APRIL 17, 2021 - 9:00 AM EDT

Farm Equipment Liquidation Auction
Estate of Tommy Edwards
448 Cattail Road, Olar, SC 29843

For More Information Contact:

LARRY DAVIS 912-282-5725

AARON EASTERS 843-858-0677

CRAIG FOSKEY 912-286-1289

*Interested in selling your equipment in any of
our upcoming auctions, or to have an auction of
your own? Contact Us Today at 912-375-3491!*

7287 HAYNES LENON HIGHWAY, EVERGREEN, NC 28438

DIRECTIONS: From junction of Highway 74 & Highway 242 take Highway 242
North through Evergreen, 1.5 miles to sale site on the right.

TRACTORS

JOHN DEERE 4440 TRACTOR, C&A, W/
QUAD RANGE TRANS (THIS IS IN SHOP
WITH MOTOR PULLED OUT TO BE
REBUILT. WILL BE SOLD BY PICTURES.
AUCTIONEERS WILL LOAD TRACTOR ON
SUCCESSFUL BIDDERS TRUCK, TUESDAY,
MARCH 9TH @ 10:00 AM ONLY)

KUBOTA M126 GX MFWD TRACTOR, W/
C&A, PS, LH REV TRANS, (3) REMOTE
OUTLETS, PREMIUM CAB, BIO STEER

KUBOTA M7-151 PREMIUM MFWD TRAC-
TOR W/ C&A, PS, LH REV TRANS, (4)
REMOTE OUTLETS, 420/80R46 DUALS
REAR, 320/85R34 FRONT, PREMIUM
CAB, EASY COMMAND CENTER CON-
TROLS

JOHN DEERE 6000 HI CYCLE W/ YELLO TOP,
8R DROP KNOZZLE BOOMS

CASE IH 7120 TRACTOR W/ C&A, PS TRANS,
DUAL PTOs, (2) REMOTE OUTLETS,
520/85R38 REAR DUALS

COMBINES

(2) **ROANOKE** 2R COMBINES (SALVAGE)

CASE IH 6088 RWD COMBINE W/ C&A,
FOLD DOWN GRAIN TANK, CHOPPER,
CHAFF SPREADER, 520/85R42 DUALS,
600/65R28 PUSHER, SN-Y9G602488
(3315 ENG HOURS SHOWING) (2304 SEP
HOURS)

1992 KMC WIDE BODY 4R PEANUT COM-
BINE

AMADAS MAGNUM FORCE 4R PEANUT
COMBINE

JOHN DEERE 6620 TURBO COMBINE W/
CAB, CHOPPER, DUALS

CHANDLER 5 TON HI CROP SPREADER W/
WIDE CHAIN, TWIN SPINNERS, 18.4-26
TIRES, SN-28666

FIELD EQUIPMENT

INTERNATIONAL 11 SHANK CHISEL PLOW

KING 9 SHANK CHISEL PLOW

LONG 36 BLADE DISK W/ DRAG

LONG 12' FIELD CULTIVATOR W/ ROLLING
BASKETS

LILLISTON 2R PEANUT INVERTOR

(2) **VADA** 16' DRYING WAGONS W/ T/A

CASE IH 2208 8R36" CORN HEAD W/
DUAL DRIVES, HYD DECK PLATES, POLY
SNOUTS, SN-CBJ030738

UNVERFERTH 18' FIELD CULTIVATOR
W/ HYD FOLD, DRAG BAR & ROLLING
BASKETS

JOHN DEERE 643 CORN HEAD

JOHN DEERE 1520 3PT GRAIN DRILL, 15'
W/ DD OPENERS, PRESS WHEELS, SMALL
SEED BOX, 7 1/2" SPACING, FF, RM

JOHN DEERE 1570 TILLAGE W/ ROLLING
HARROW & DRAG DOOR

CASE IH 1020 FLEX HEADER 25' W/ FORE
& AFT REEL, SINGLE POINT HYD, DUAL
DRIVE SHAFTS

HORST HEADER CART

LANDPRIDE RC 3615 BATWING MOWER W/
CUSHION TIRES

LILLISTON 4R ROLLING CULTIVATOR

BURCH 8R36" BEDDER W/ DRAG DOOR
BED SHAPERS, RM

BURROUGHS 300 GAL 3PT SPRAYER W/ 48'
BOOMS

1000 GAL ALUM NURSE TANK ON T/A GEAR
W/ MIX TANK, PUMP & MOTOR

JOHN DEERE 7300 8R36" VACUUM
PLANTER W/ STACK FOLD TOOL BAR,
BED KNOCKERS, DUAL GAUGE WHEELS,
INSECTICIDE HOPPER, COTTON CLOSING
SYSTEM

UFT 4R PEANUT INVERTOR

KMC 4R PEANUT INVERTOR 36-38 W/ HYD
DRIVE, BELTS & RODS

INTERNATIONAL 475 DISC HARROW 20' W/
HYD WING FOLD, 52 BLADES

JOHN DEERE 630 DISC HARROW 26' W/
HYD FOLD, 68 BLADES, DEPTH CON-
TROLLER

TRUCKS-TRAILERS

2006 **FORD F450** SUPER DUTY TRUCK W/
DSL ENG, AUTO TRANS, 12' METAL ELEC
DUMP BODY (39000 MILES SHOWING)

FORD F350 TRUCK, V8 5 SPD MANUAL-
TRANS, W/ 8' METAL BED, GOOSENECK
HITCH

KENWORTH T600 ROAD TRACTOR, 3406
CAT ENG, 10 SPD, WALK IN SLEEPER,
WET LINE, SLIDE 5TH WHEEL, AIR RIDE,

11R24.5 TIRES ON BUDD WHEELS

1995 **KENWORTH T800** T/A ROAD TRACTOR
W/ 54" FLAT TOP SLEEPER, CAT ENG, 10
SPD TRANS, WETLINE, AIR RIDE, 11R24.5
TIRES ON BUDD WHEELS

COBRA 40' ALUM FRAMELESS DUMP TRAIL-
ER W/ AIR RIDE SUSP, 11R24.5 TIRES ON
ALUM BUDD WHEELS, SPREAD AXLE,
ROLL TARP, GRAIN DOOR

STECO 36' ALUM DUMP TRAILER, FRAME
TYPE, 295/75R22.5 TIRES ON BUDD
WHEELS, SPRING SUSP, ROLL TARP,
GRAIN DOOR

TRAILMOBILE 48' FLATBED TRAILER

EARLY CONSIGNMENTS

(2) **DECLOET** 2R TOBACCO HARVESTERS W/
DEFOLIATORS & STRIPPER HEADS, DUMP
BOXES, 3 WHEEL DRIVE

CASE IH MX285 MFWD TRACTOR W/
C&A, PS TRANS, (4) REMOTE OUTLETS
POWER BEYOND, QH, DRAWBAR, HAM-
MER STRAP, 520/85R46 REAR DUALS,
480/70R34 FRONT DUALS

SHEPPARD GREEN LEAF SYSTEM W/
TRANSITION TABLE, LOADING BELT, BOX
TRACKS & SCALES (LOCATED @ 4238
HAYNES LEYNON HWY, CHADBORN, NC
28431-TO BE SOLD BY PICTURE)

2005 GVM PROWLER 990 GT SPREADER
TRUCK W/ NEW LEADER G4 SPREAD-
ER BODY W/ VIPER PRO SYSTEM,
380/90R46 TIRES