

THIS BLOCK RESERVED FOR THE CLERK OF THE SUPERIOR COURT.

### Recording Statement

THIS PLAT HAS BEEN REVIEWED BY BARTOW COUNTY AND IS AUTHORIZED TO BE RECORDED.

BARTOW COUNTY

DATE

LINE TABLE		
LINE	BEARING	LENGTH
L1	S62°03'40"W	30.00
L2	S61°10'10"W	197.97
L3	S63°19'00"W	27.03
L4	N56°12'30"E	224.05
L5	N02°27'34"E	89.95
L6	S85°20'10"E	186.60
L7	N84°40'41"W	74.08
L8	S02°27'34"W	258.94
L9	S89°13'11"W	346.88

LOUISVILLE AND NASHVILLE RAILROAD CO.  
100' RIGHT-OF-WAY

**TRACT 2**  
6.619 ACRES

PART TAX PARCEL:  
0105-0219-017

**TRACT 1**  
3.944 ACRES

PART TAX PARCEL:  
0105-0219-017

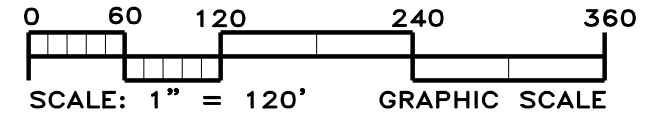
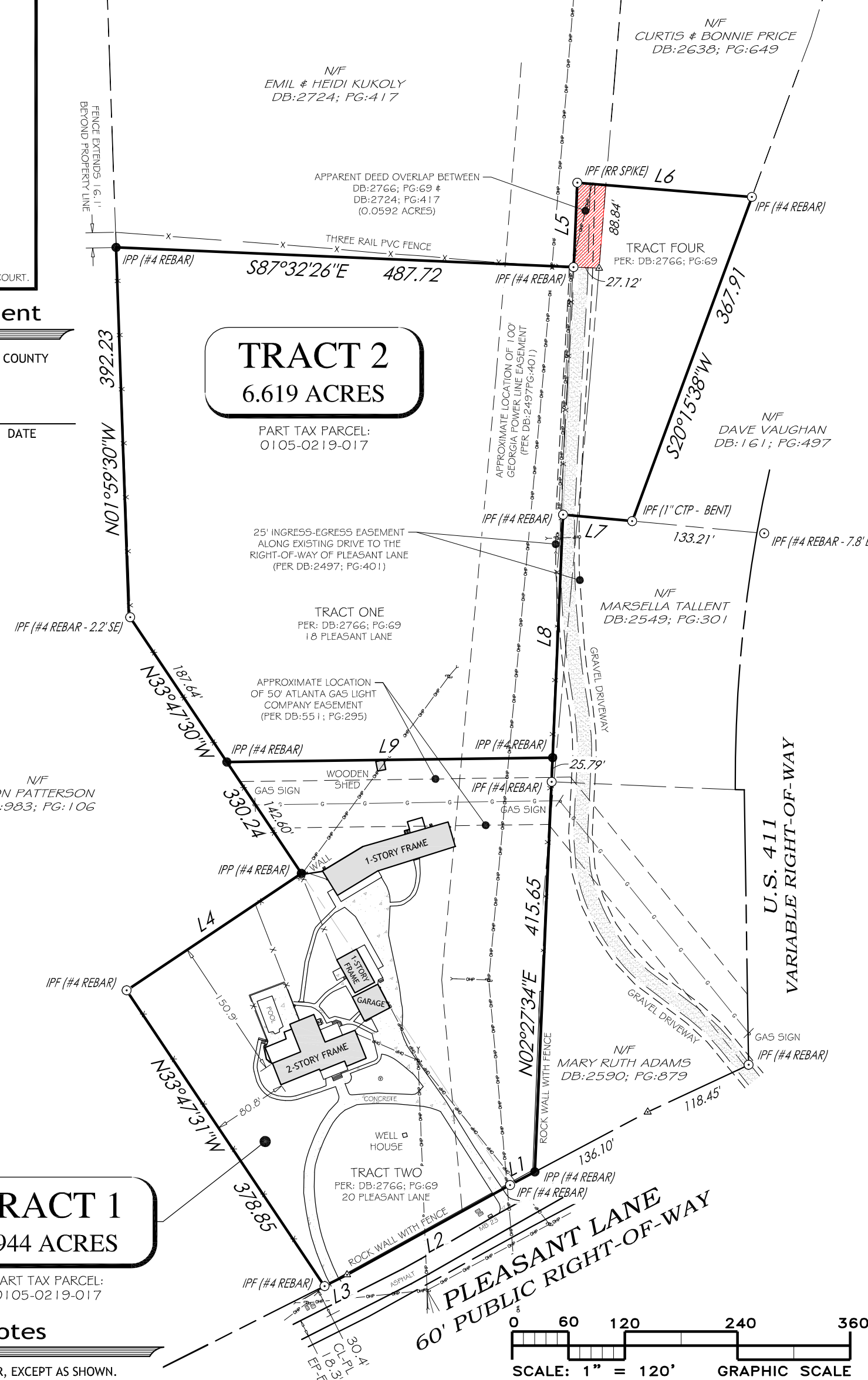
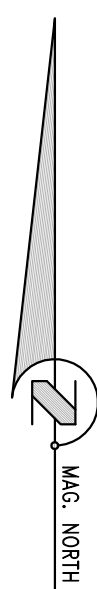
### General Notes

1. ALL PROPERTY CORNERS ARE 1/2" REBAR, EXCEPT AS SHOWN.
2. THE FIELD DATA UPON WHICH THIS PLAT IS BASED HAS A CLOSURE PRECISION OF 1" IN 17,343 FEET, AND AN ANGULAR ERROR OF 03" PER ANGLE POINT, AND WAS ADJUSTED USING THE COMPASS RULE.
3. THIS PLAT HAS BEEN CALCULATED FOR CLOSURE AND IS FOUND TO BE ACCURATE WITHIN 1' IN 976,511 FEET.
4. EQUIPMENT USED: TOPCON 3005W, TOTAL STATION, WITH DATA COLLECTOR.
5. RIGHTS OF WAY ARE BASED UPON PINS FOUND AND/OR CENTERLINES OF PATHS OF TRAVEL.

### Conformity Statement

THIS SURVEY WAS PREPARED IN CONFORMITY WITH THE TECHNICAL STANDARDS FOR PROPERTY SURVEYS IN GEORGIA AS SET FORTH IN CHAPTER 180-7 OF THE RULES OF THE GEORGIA BOARD OF REGISTRATION FOR PROFESSIONAL ENGINEERS AND LAND SURVEYORS AND AS SET FORTH IN THE GEORGIA PLAT ACT O.C.G.A. 15-6-67.

KEVIN COONEY - GA PLS 2980



CO = CLEAN OUT	WM = WATER METER
ICV = IRRIGATION VALVE	WV = WATER VALVE
IPF = IRON PIN FOUND	L.L. = LAND LOT
IPP = IRON PIN PLACED	L.L.L. = LAND LOT LINE
OTP = OPEN TOP PIPE	PP = POWER POLE
CTP = CRIMPED TOP	-P- = POWER LINE
R/W = RIGHT OF WAY	-X- = FENCE LINE
CM = CONCRETE MONUMENT	CH. = CHORD
N/F = NOW OR FORMERLY	A or L = ARC LENGTH

**BOUNDARY SURVEY FOR:**  
**AMERICAN AUCTIONEERS, LLC**

LOCATED IN LAND LOT 219,  
23RD DISTRICT, 2ND SECTION,  
BARTOW COUNTY, GEORGIA  
BEING TAX PARCEL 0105-0219-017

DATE: MAY 8, 2017	REV:	JOB NO:17040
DATE OF FIELDWORK: APRIL 12, 2017		